

SUSTAINABILITY SUMMIT



So Helpful, It's Practically Cheating: How Sustainable Jersey's Technical Assistance Can Help Your School or Municipality

May 5, 2023

Nancy Quirk, Senior Energy Program Manager

IG: [Sustainable_Jersey](#) | Twitter: [@SJ_Program](#) and [@SJ_Schools](#) | FB: [@SustainableJersey](#) | LinkedIn: [sustainable-jersey](#)

Panel Speakers

Mario Caballero, Green Team Chair, Clinton Township

Ann Beirne, Executive Assistant to the Superintendent,
Jersey City Public School District

Michelle Rossi, ESIP Coordinator, NJ Board of Public
Utilities

Session Moderator:

Nancy Quirk, Senior Energy Program Manager,
Sustainable Jersey

Energy Actions

	Energy Efficiency	Renewable Energy	Alternative Fuel Vehicles
Municipal/School Facilities	<ul style="list-style-type: none"> • Energy Efficiency for Municipal Facilities • Energy Tracking and Management 	<ul style="list-style-type: none"> • On-Site Geothermal • On-Site Solar +10 pt storage/resilience + 5 pt solar thermal • On-Site Wind • Buy Renewable Energy 	<ul style="list-style-type: none"> • Fleet Inventory • Purchase Alternative Fuel Vehicles • Meet Green Fleet Targets
Community Energy Use	<ul style="list-style-type: none"> • Energy Assistance Outreach • Commercial Energy Efficiency Outreach • Residential Energy Efficiency Outreach 	<ul style="list-style-type: none"> • Make Your Town Solar Friendly • Municipally Supported Community Solar • Solar Outreach • Renewable Government Energy Aggregation (R-GEA) 	<ul style="list-style-type: none"> • Make Your Town Electric Vehicle (EV) Friendly • Public EV Chargers • Electric Vehicle Outreach

Energy Efficiency for Facilities Action



Municipal buildings



Schools

5 points - Audit on at least one building

10 points - Local Government Energy Audit (LGEA)

15 points - Significant upgrade work

20 points - LGEA on all buildings PLUS significant upgrade work

30 points - Efficiency upgrades; 10%-19% decreased energy use

40 points - Efficiency upgrades; 20%-29% decreased energy use

50 points - Efficiency upgrades; at least 30% decreased energy use

Why Participate Energy Technical Assistance?

Energy Technical Assistance

- Improves building comfort and safety
- Lowers carbon footprint
- Saves money

Technical assistance scaled to fit needs of municipality or school district.

- Designated primary contact
- Access to utility bills
- Monthly meetings during active technical assistance period

How Energy Technical Assistance Works

PAST

Compile municipal or school district energy history

PRESENT

Analyze current energy use

FUTURE

Identify opportunities for facility upgrades and funding / incentives

Energy History

- NJCEP and/or Utility energy incentives received
- Completed Sustainable Jersey energy actions
- Additional information:
 - Planned new construction projects
 - Recent building acquisitions
 - Upcoming renovations
 - Other relevant information



Sustainable Jersey Energy History Report for Mayberry School District

NJCEP Incentives History

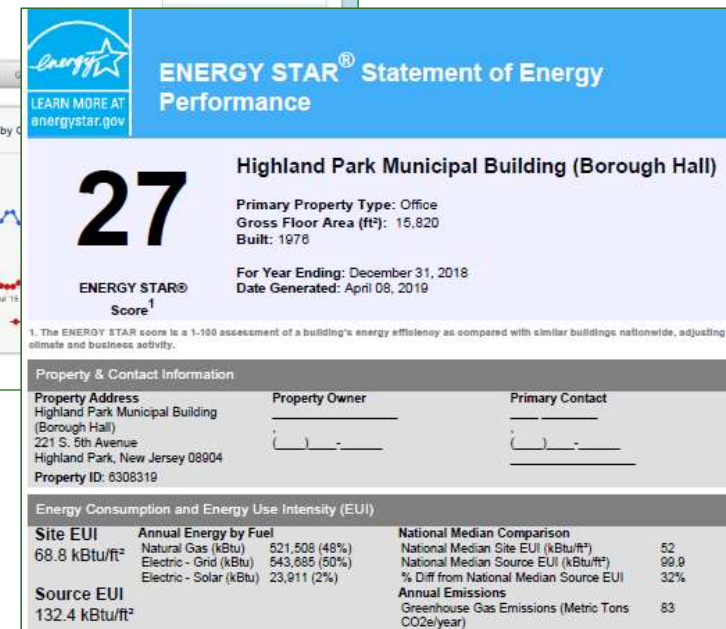
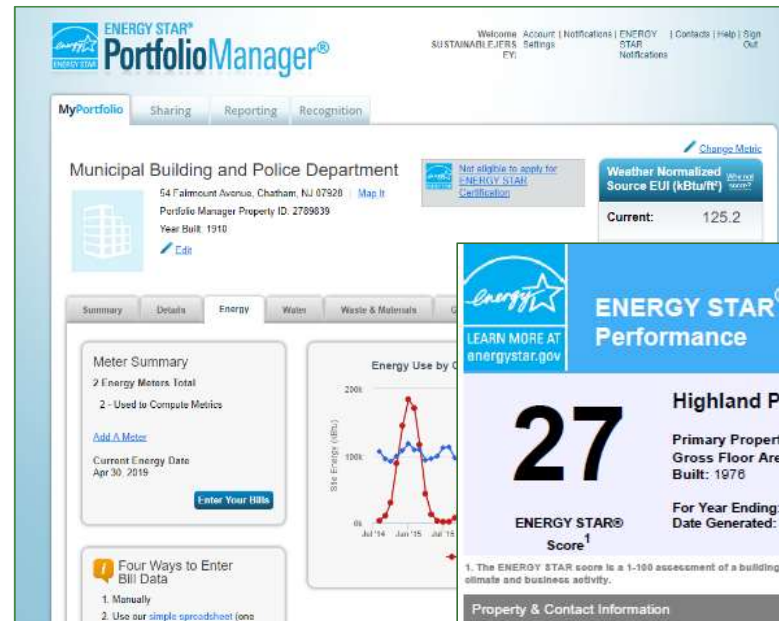
Year	Project Type	NJCEP Program	Invoiced Incentive	Premise Sq. Ft	Street Address
2011	Work	Direct Install	\$50,000.00	22,162	Elementary School, 359 Henry Ave
2012	Work	Direct Install	\$20,550.70	8,500	Garage, 120 Carol Ave
2012	Work	Direct Install	\$17,138.88	10,000	Middle School, 359 Ohara Ave
2012	Work	Direct Install	\$21,971.87	22,100	High School, 574 River Street
2015	Audit	Local Government Energy Audit	\$2,827.37	22,100	574 River Street
2015	Audit	Local Government Energy Audit	\$3,432.11	39,000	1618 Alton Ave
2015	Audit	Local Government Energy Audit	\$3,180.14	22,162	359 Ohara Ave
2015	Audit	Local Government Energy Audit	\$1,915.00	1,900	574 River Street
2015	Audit	Local Government Energy Audit	\$3,432.11	9,295	105 Durham Rd
2015	Audit	Local Government Energy Audit	\$2,925.52	28,691	187 Night Ave
2015	Audit	Local Government Energy Audit	\$2,960.00	8,550	120 Border Ave

Sustainable Jersey Energy Action History

Action	Years Certified
Energy Efficiency	
Carbon Footprint *	2010, 2019
Energy Tracking and Management	2010, 2016, 2019
Energy Efficiency for School Facilities *	
Renewable Energy	
On-Site Solar Energy	
On-Site Geothermal	2019
Buy Renewable Energy	

Energy Usage in Facilities

- Utility bill review
 - Map meters to facilities
 - Look for anomalies
 - Request energy data from utility
- Set up energy tracking system
 - ENERGYSTAR Portfolio Manager
- Energy Tracking and Management
 - 10 pts
 - 12 months utility data
 - 20 pts
 - ongoing tracking
 - benchmarking



EPA's ENERGYSTAR Portfolio Manager (ESPM)

Identify Needs and Incentives

- Identify priorities for upgrades
 - List particular equipment priorities
 - Known overheating/underheating issues, etc.
- Review incentive options
 - New Jersey's Clean Energy Program
 - Electric and Natural Gas Utility Programs
 - Federal and other resources
- Apply for selected incentives



NJCEP Incentives

- New Construction (residential, commercial, government)
- Combined Heat & Power & Fuel Cells
- Local Government Energy Audit
- Energy Savings Improvement Program



<https://njcleanenergy.com/muni> Contact Us | Site Map

HOME RESIDENTIAL **COMMERCIAL, INDUSTRIAL AND LOCAL GOVERNMENT** RENEWABLE ENERGY

COMMERCIAL, INDUSTRIAL & LOCAL GOVERNMENT

PROGRAMS

- EXISTING BUILDINGS ENERGY EFFICIENCY
 - BENCHMARKING
 - LARGE ENERGY USERS PROGRAM
 - LOCAL GOVERNMENT ENERGY AUDIT**
 - UTILITY PROGRAMS
- NEW CONSTRUCTION ENERGY EFFICIENCY**
- SINGLE MEASURE: SMARTSTART NEW CONSTRUCTION
- MULTI MEASURE: CUSTOMER TAILORED
- COMPREHENSIVE: PAY FOR PERFORMANCE
- DISTRIBUTED ENERGY RESOURCES
 - COMBINED HEAT AND POWER - FUEL CELL
 - DER MICROGRID FEASIBILITY STUDIES
- OTHER/SPECIALIZED
 - ENERGY SAVINGS IMPROVEMENT PROGRAM (ESIP)

Home » Commercial & Industrial

Local Governments, Schools and Non-Profits

Note: Select energy efficiency programs for existing buildings are transitioning to the utility companies
To learn more about this transition and for utility contact information, please visit this page.

NJCEP Pay for Performance (P4P) for existing buildings and NJCEP Direct Install will no longer accept applications starting July 1, 2021. All eligible applications accepted before that time will continue with NJCEP until final payment.

PSE&G customers who purchased electric or natural gas energy efficiency equipment prior to June 1, 2021 may be eligible for SmartStart Buildings (SSB) and/or Customer Tailored Energy Efficiency Program (CTEEP) rebates. For non-PSE&G customers, equipment purchased prior to July 1, 2021, may be eligible for SSB and CTEEP rebates.

For projects (single- or multi-measure) saving electricity and natural gas, aka "dual-fuel", where gas or electric service, but not both, are provided by PSE&G should continue to apply to NJCEP's SSB, CTEEP, and P4P existing buildings until the other utility programs launch.

NJCEP's SmartStart Buildings (SSB), Customer Tailored Energy Efficiency Program (CTEEP), and Pay for Performance (P4P) programs will remain available for new construction projects and major gut renovation projects only beginning on July 1, 2021.



Throughout New Jersey, residents and business owners are looking for ways to save energy and the environment - local governments and schools are no exception. New

Program Updates

- Energy Efficiency Program Transition Update
- Other updates posted.

Program Literature

Applications and Brochures
Download the Latest Program Materials

Find a Trade Ally

Select a contractor for an energy efficient upgrade today!

Success Stories

Library IV Restaurant
New Lighting and HVAC equipment for greater savings

Clean Energy Learning Center

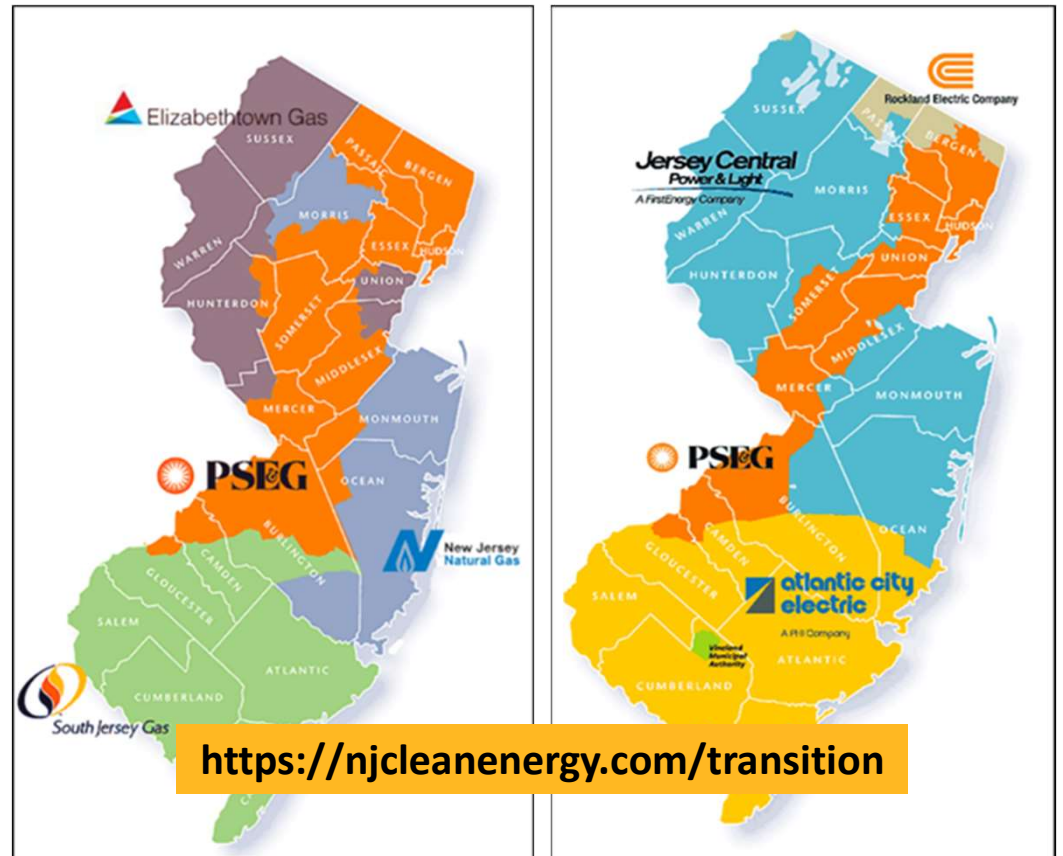
New Jersey Clean Energy Learning Center

Local Govt and Schools

Find out what financial incentives are available today!

Utility Incentive Programs

- Existing Buildings
 - residential
 - commercial
 - government
- Incentives vary by utility
- Contact your local natural gas and electric utilities





Sustainable Jersey Energy Technical Assistance

- Energy Tracking and Management
- Apply for energy efficiency incentives
 - NJCEP Local Government Energy Audits (LGEAs)
 - Utility energy efficiency incentives
 - NJCEP Energy Savings Improvement Program ESIP

Email info@sustainablejersey.com to learn about current technical assistance options open to your school or municipality.

Upcoming Events and Opportunities

FREE ENERGY TECHNICAL ASSISTANCE FOR SCHOOLS AND MUNICIPALITIES IN ELIZABETHTOWN GAS, NEW JERSEY NATURAL GAS, AND SOUTH JERSEY GAS SERVICE TERRITORIES

Free technical assistance to identify and apply for utility incentives and New Jersey's Clean Energy Program (NJCEP) incentives for energy efficiency audits and facility upgrades. This technical assistance is funded by Elizabethtown Gas, New Jersey Natural Gas, and South Jersey Gas.

For more information please visit: bit.ly/EnergyTAforMunisandSchools

2023 MUNICIPAL CERTIFICATION CYCLE

The next deadline to apply for certification is **May 12, 2023**. The final application deadline is **July 27, 2023**. View the full cycle timeline on the 2023 Certification Cycle page.

For more information please visit: bit.ly/MuniCertCycle

2023 SUSTAINABLE COMMUNITIES GRANT PROGRAM

Atlantic City Electric and Sustainable Jersey are pleased to offer **\$50,000** to support municipal environmental stewardship and resiliency projects in Atlantic City Electric's service territory. Municipalities are encouraged to work with local organizations on applications, which are due **June 29, 2023**. An informational webinar will be held on **May 15, 2023 from 1:00pm - 2:00pm**.

For more information please visit:
<http://www.bit.ly/SustainableCommunitiesGrantProgram>

TRI-COUNTY SUSTAINABILITY GENERAL MEETINGS

This Sustainable Jersey Regional Hub will host virtual meetings on a variety of sustainability topics throughout the year. The next meeting is **May 31, 2023 from 7:00pm - 8:00pm**.

For more information please visit: <http://www.bit.ly/Tri-CountySustainability>

2023 SCHOOL CERTIFICATION CYCLE

The final deadline to apply for certification and Digital Schools Star Recognition is **June 15, 2023**. View the full cycle timeline on the 2023 Certification Cycle page.

For more information please visit: <http://www.bit.ly/SchoolsCertCycle>

TREES FOR SCHOOLS PROGRAM, TREE-PLANTING GRANTS FOR NJ PUBLIC SCHOOLS, COLLEGES AND UNIVERSITIES

The Trees for Schools program will provide **\$2.5 million** in grants to New Jersey public school districts, county colleges and state colleges and universities to fund the planting of trees on campuses across New Jersey. Competitive grants of **\$10,000 to \$500,000** will fund costs associated with planning, site preparation, trees, planting, watering, monitoring and related expenses over a three-year period. Applications are due on **July 13, 2023**, for spring 2024 plantings. An informational webinar will be held on **May 18, 2023 from 3:00pm - 4:30pm**. The Trees for Schools program is a collaboration of the New Jersey Department of Environmental Protection, The College of New Jersey and Sustainable Jersey.

For more information please visit: bit.ly/TreesforSchools

Sustainable Jersey Underwriters and Sponsors

PROGRAM UNDERWRITERS



GRANTS PROGRAM



CORPORATE SPONSORS



*Digital Schools Sponsor

**SO HELPFUL, IT'S PRACTICALLY CHEATING: HOW SUSTAINABLE
JERSEY'S TECHNICAL ASSISTANCE CAN HELP YOUR SCHOOL OR
MUNICIPALITY**

Mario Caballero
Clinton Township, NJ

Environmental Commission - Chair
Green Team - Chair

05-May-2023

 <https://www.facebook.com/ClintonTwpNJGreenTeam>

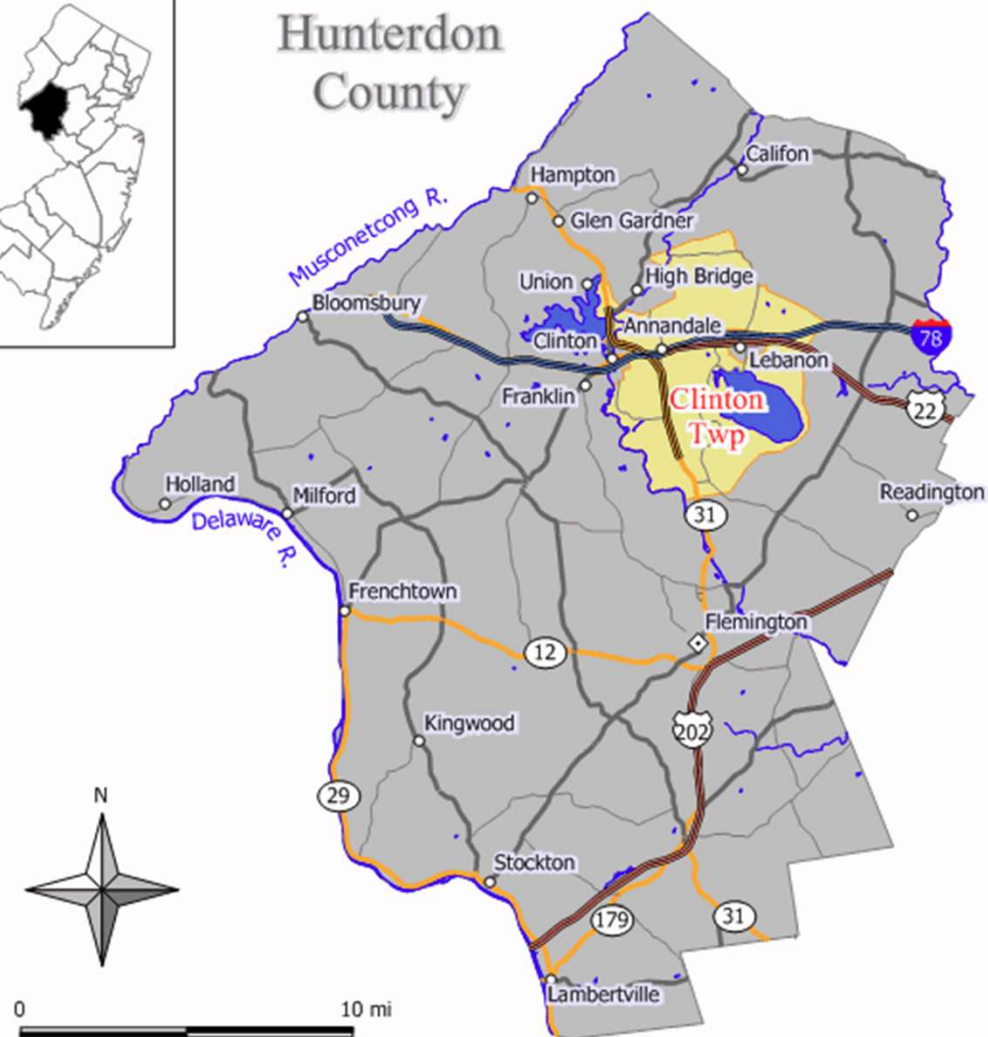
 <https://www.instagram.com/clinton.twp.nj.green.team>

 <https://twitter.com/ClintonTwpGreen/>

Clinton Township, NJ



- Located in Hunterdon County
- Population 13,505 (2020 Census)
- Home to the Round Valley Reservoir (largest in NJ)
- Area = 34 square miles
- Municipal Open Space = 1.5 square miles (130 NJ municipalities are smaller)
- Green Team created in 2021
- Sustainable Jersey Certified in 2022



It is just Data Entry, right?

During our initial certification cycle, we wanted to pursue these Energy actions:

- Energy Efficiency for Municipal Facilities
- Energy Tracking and Management

Energy	^
Municipal Energy Initiatives	
<u>Energy Efficiency for Municipal Facilities</u>	
5 Points	
🏆 Priority for all certification levels	
• THIS ACTION HAS VARIABLE POINTS: 5 — 50 • NON-COMPETITIVE FUNDING AVAILABLE	
<u>Energy Tracking and Management</u>	
10 Points	
🏆 Priority for all certification levels	
• THIS ACTION HAS VARIABLE POINTS: 10, 20	

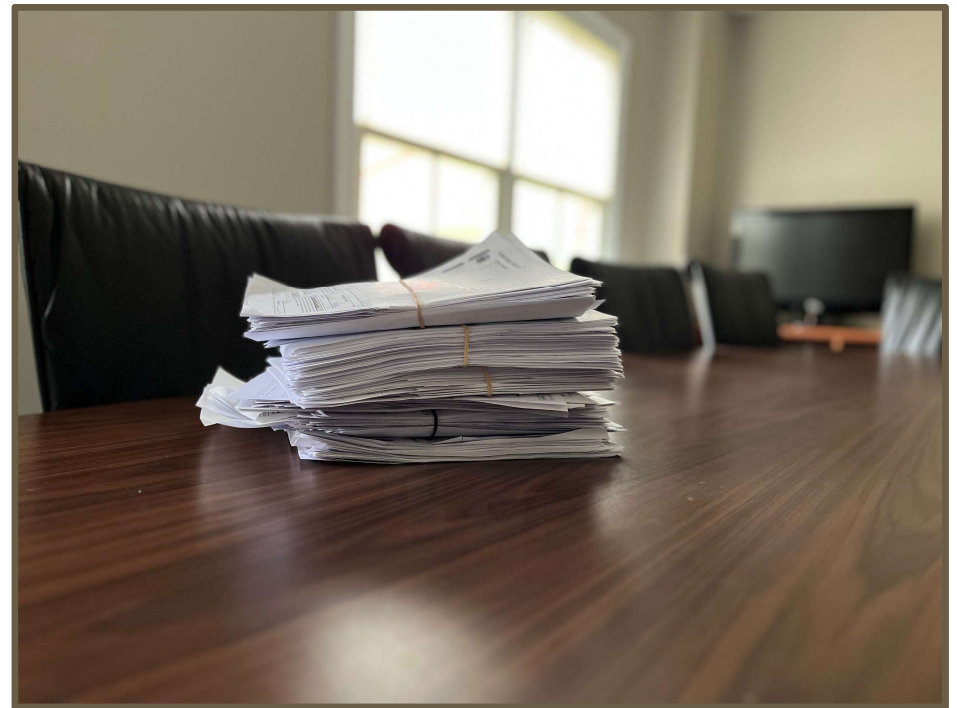
Energy Tracking and Management

Plan:

- Gather all the bills
- Create a spreadsheet
- Spend 2 hours on a Friday morning entering the data

Reality:

- After 3 hours, ended up with a listing of 20+ account numbers, frustrated, and demoralized



Energy Efficiency for Municipal Facilities

History:

- Municipality had performed an LED lighting upgrade in 2020
- Took advantage of the Direct Install Program

Challenges:

- No ASHRAE Level 2 audit performed
 - Needed additional historical energy data to prove the that we were now saving energy
 - Employee who handled the upgrade had left the township, limited information left behind
-

Sustainable Jersey to the Rescue!



Daniel Wilkins

- Met with Dan at a local coffee shop to provide him with background
- Quickly went to each of the buildings and snapped pictures of the meter numbers
- Requested the historical data from JCP&L and ElizabethTown Gas on our behalf
- Created the ENERGY STAR Portfolio Management account and configured the right sharing settings
- Entered all the data for us
- Filled out the Sustainable Jersey Energy Use Intensity (EUI) Spreadsheet

Results

- Within weeks, we had all historical data entered in the ENERGY STAR Portfolio Management Tool
- Identified data entry issues (BTU vs. Therms, extra "0") showing that our energy had increased when in reality it had decreased
- Able to submit both actions and received 35 points
- Set us in a path where ongoing data entry takes 5 minutes monthly





How Sustainable Jersey's Technical Assistance Can Help Your School or Municipality

Ann L. Beirne
Green Team Leader
Jersey City Public Schools
May 5, 2023

How Do we Even Start?

How do we even start????



- Reach out to the Sustainable Jersey staff and plan to meet to discuss how your school district can become sustainable.
- Register your school or District.
- Create a Green Team with a diverse group from all areas of the district staff and stakeholder groups.
- Review the Actions carefully with the team.
- Recruit staff from various departments to determine what the district is already doing.
- Organize the information in each Action area. Decide which Action areas you are prepared to submit documentation. Contact Sustainable Jersey Staff to assist with Climate, Green and Energy areas.
- Prioritize goals for the coming year.
- Organize process for next year.

Reach out to the Sustainable Jersey staff and plan to meet to discuss how your school district can become sustainable.



Create a Green Team with a diverse group from all areas of the district staff and stakeholder groups.

Tips for starting a Green Team



Establishing our district green team at Jersey City Public Schools:

- Superintendent selected representatives from various departments
- This skeletal team responsible for:
 - Selecting actions from SJS program
 - Bringing in additional departments as needed – Staff from Budget Office, Facilities, Food Service, Curriculum, IT and Early Childhood were recruited to assist in certification



Review the Actions carefully with the team.

Sustainable Jersey for Schools brochure

Sustainability Technical Assistance



- Building Portfolio
- LGEA NJ Clean Energy Program
- Energy Savings Improvement Plan (ESIP)
- Sustainable Jersey Energy Use Intensity (EUI)



Building Portfolio

Building Portfolio

Date Downloaded: 03/30/2023 10:38 AM EDT

Date Generated: 03/30/2023 10:37 AM EDT

Number of properties in report: 48

Property Name	Address 1	Property GFA - Self-Reported (ft ²)	Year Built	Occupancy	Electric Meters	Gas Meters	Oil
Abraham Lincoln High School & Freshman Academy	60 Crescent Avenue	272932	1920	100	Meter 126667240 Account 7429324509 Meter 126667242 Account 7429324703 Meter 728007768 Account 4250803007 Meter 9206160 Account 4250801918 Meter 9211017 Account 4250803007 Meter 9206160 Solar	Meter 2805147 Account 4253304508 Meter 2933905 Account 4253304508 Meter 3229125 Account 4245456108	
Academy 1 Middle School	209 Bergen Avenue	64884	1966	100	Meter 9205877 Account 4250803201 Meter 9205877 Solar	Meter 2256882 Account 4253305008	
Alexander D. Sullivan School (PS #30)	171 Seaview Avenue	93129	1906	100	Meter 9215389 Account 4243550800 Meter 226016598 Account 7429324401 Meter 22606613 Account 7429322603 Meter 278003271 Account 7420119708	Meter 2045269 Account 4243550800 Meter 4387285 Account 7340112502	Fuel Oil
Alfred E. Zampella School (PS #27)	201 North Street	94611	1966	100	Meter 9210772 Account 4253550401 Meter 727000024 Account 7429322301 Meter 727000113 Account 7429322808 Meter 727000224 Account 7429323804 Meter 728006328 Account 7429323308 Meter 16440987 Account 7429322204		

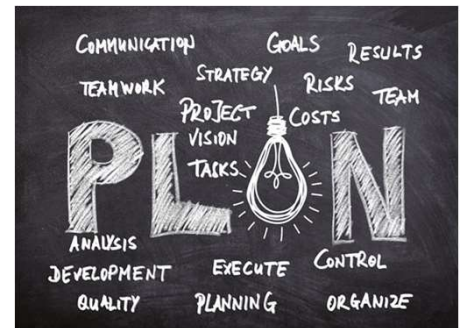
EUI Spreadsheet

Fill in the blue and coral shaded cells only. Do not type in grey cells.		Baseline Energy Usage Data (before work was completed) Use actual billing data.				[Enter year for baseline data]	Estimated Savings identified in LGEA or Direct Install Assessment					[Enter year for estimated energy savings]				
Building Name	Building area in square feet	Enter grid purchased electricity (kWh) in this column	Enter natural gas (therms) in this column	Enter oil (gallons) in this column	Total kBtu per month	Baseline EUI	Enter potential electricity savings from ECMs (kWh) in	Enter potential natural gas savings from ECMs (therms) in	Enter potential oil savings from ECMs (gallons) in	Enter potential propane savings from ECMs (gallons) in	Enter potential on-site generated electricity savings from ECMs (kWh) in	Total kBtu per month after energy upgrades	EUI after Energy Upgrades	% Change EUI in Building	Weighted (Allocate) percentage based on the size of	
Abraham Lincoln High School & Freshman Academy	272932	1575334.8	127093		30,227,365	110.8	784,638	8590				20,916,591	76.6	-30.8%	-8.61%	
Academy I Middle School	64884	946039.4	0		10,138,534	156.3	238,381	0				7,583,848	116.9	-25.2%	-1.67%	
Alexander D. Sullivan School (PS #30)	93129	395789.2	2224.2	3597591	508,414,537	5,459.3	45,190	90				507,920,794	5,453.9	-0.1%	-0.01%	
Alfred E. Zampella School (PS #27)	94611	1207767.2			12,943,424	136.8	184,926	0				10,961,605	115.9	-15.3%	-1.48%	
Anthony J. Infante School (PS #31)	36973	132240	13558.2		2,840,803	76.8	45,882	110				2,337,544	63.2	-17.7%	-0.67%	
Chaplain Charles J. Watters School (PS #24)	118240	609843.6	439.6	4415144.3	625,041,469	5,286.2	305,243	-490				621,821,684	5,259.0	-0.5%	-0.06%	
Charles E. Trefurt School (PS #8)	163196	475118	27412	3912713.8	553,460,400	3,271.1	260,660	1100				550,551,453	3,253.9	-0.5%	-0.09%	
Christa McAuliffe School (PS #28)	126761	1527611.7			16,371,140	129.1	195,956	0				14,271,114	112.6	-12.8%	-1.66%	
Cornelia F. Bradford School (PS #16)	61684	272400	27904.1		5,849,192	94.8	44,854	3320				5,019,900	81.4	-14.2%	-0.90%	
Danforth Early Childhood Center	78996	236826	160.8	2615927.9	368,985,976	4,670.9	79,429	290				368,104,300	4,659.8	-0.2%	-0.02%	
Dr. Charles P. DeFuccio School (PS #39)	126429	390018	7480.2	4454778	628,376,666	4,974.9	150,599	4760				626,862,924	4,958.2	-0.3%	-0.04%	
Dr. Maya Angelou School (PS #20)	108800	1020763.6	28900.4		13,373,882	128.4	205,155	150				11,759,523	108.1	-15.8%	-1.77%	
Dr. Michael Conti School (PS #5)	148049	678891	63262.5		13,918,115	94.0	254,235	-430				11,238,674	75.9	-19.3%	-2.92%	
Dr. Paul Rafalides School (PS #33)	30607	152066.2	14817.3		3,185,483	104.1	50,634	-80				2,651,247	86.6	-16.8%	-0.53%	
Dr. Ronald McNair Academic High School	132311	1323920.2	47743.1		19,201,240	145.1	415,506	694				14,675,467	110.9	-23.6%	-3.19%	
Ezra L. Nolan Middle School (PS #40)	132483	612092.9	56342.3		12,475,631	94.2	314,447	660				9,036,459	68.2	-27.6%	-3.74%	
Frank R. Conwell Elementary School (PS #3)	117939	1385713.9	8926		15,777,176	133.8	439,234	-80				11,078,395	93.9	-29.8%	-3.60%	
Frank R. Conwell Middle School (PS #4)	169678	1877887.8	51936.2		25,578,287	150.7	705,220	-280				18,049,971	106.4	-29.4%	-5.11%	
Franklin L. Williams Middle School (PS #7)	163855	1838894.7	64030.8		26,430,337	161.3	468,739	-130				21,420,596	130.7	-19.0%	-3.18%	
Fred W. Martin Center of the Arts (PS #41)	140467	1135367.1	14445.8	5987033.5	852,329,427	6,067.8	471,226	5480				846,703,962	6,027.9	-0.7%	-0.09%	
Gladys Cannon Nursery School	66180	165480.5	6.3	2567793.5	361,462,640	5,461.8	14,485	-50				361,312,656	5,459.5	0.0%	0.00%	
Glenn D. Cunningham Early Childhood Center	12100	118803.3	7923.3		2,105,140	174.0	51,957	40				1,544,126	127.6	-26.6%	-0.33%	
James F. Murray School (PS #38)	120940	3777015	2379.9	3658725.4	516,800,560	4,273.2	182,362	-460				514,894,520	4,257.4	-0.4%	-0.05%	
James J. Ferris High School & Ferris Junior Academy	377122	2247958.1	142807		39,085,655	103.6	969,695	160				28,676,809	76.0	-26.6%	-10.28%	
Jersey City Board of Education (Central Office)	246800	4425453.2			47,426,785	192.2	1,008,005	742				36,546,267	148.1	-22.9%	-5.80%	
Jersey City Regional Day School	30587	449235.4			4,814,375	157.4	243,933	0				2,200,189	71.9	-54.3%	-1.70%	
Joseph H. Brensinger School (PS #17)	153864	1440627.8	56357.9		21,356,528	138.8	490,810	-440				16,142,806	104.9	-24.4%	-3.85%	
Jotham W. Wakeman School (PS #6)	148882	640130.9		2543271.3	363,113,727	2,438.9	236,075	-580				360,644,654	2,422.4	-0.7%	-0.10%	
Julia A. Barnes School (PS #12)	86375	224532.6	30721.9		5,632,075	65.2	38,597	20				5,216,338	60.4	-7.4%	-0.65%	
Liberty High School	33316	92347.1	133.5	1013099.4	142,915,508	4,289.7	26,530	-70				142,638,541	4,281.4	-0.2%	-0.01%	
Mahatma Gandhi Elementary School (PS #23)	164653	856728.4	4565	4190268.3	595,219,754	3,615.0	344,069	-870				591,623,778	3,593.2	-0.6%	-0.10%	
Martin Luther King Jr. School (PS #11)	104509	714741.9	37377.8		11,584,429	110.8	213,596	220				9,272,259	88.7	-20.0%	-2.14%	
Nicholas Copernicus School (PS #25)	132860	1052824	70.6	2049493.1	298,376,978	2,245.8	296,239	-850				295,290,845	2,222.6	-1.0%	-0.14%	
Ollie Culbreth Jr. School (PS #14)	98036	293054.3	42163.7		7,460,630	76.1	87,594	1660				6,347,601	64.7	-14.9%	-1.50%	
Patricia M. Noonan Elementary School (PS #26)	123000	104476.8	36578.1		15,002,020	122.0	242,825	2650				12,121,458	98.5	-19.2%	-2.42%	
President Barack Obama School (PS #34)	103444	59275.7	33702.5		3,890,790	95.6	242,825	2650				7,010,228	67.8	-29.1%	-3.08%	
PS #23 Annex Early Childhood Development Center	12375	79339	4241.3		1,295,598	104.7	29,882	-30				978,508	79.1	-24.5%	-0.31%	
PS #23 Annex Marcanthony DiNardo School	58480	172616.9	18004.9		3,740,419	64.0	29,882	-30				3,423,329	58.5	-8.5%	-0.51%	
Rafael De J. Cordero School (PS #37)	135534	321610.3	126.5	5449992.8	766,878,019	5,658.2	34,853	380				766,464,605	5,655.1	-0.1%	-0.01%	
Renaissance Institute (Zero Tolerance)	63489	128963.5	0	1476972.7	208,271,836	3,280.4	46,329	220				207,745,806	3,272.2	-0.3%	-0.02%	
Rev. Dr. Ercel F. Webb School (PS #22)	157134	567515.6	72974.8		13,682,545	87.1	194,338	4010				11,178,809	71.1	-18.3%	-2.94%	
Whitney M. Young Jr. School (PS #15)	179590	1237527.3	100064		23,769,056	132.4	512,196	20				18,277,844	101.8	-23.1%	-4.25%	
William L. Dickinson High School	356000	1687579	1862.7	11294348	1,600,358,291	4,495.4	720,397	-2020				1,592,850,026	4,474.3	-0.5%	-0.17%	
																-14.5%

Determining what we have and organizing documentation

The Green Team took a backwards approach to the process since we began in March.

- Reviewed each Action and each member reached out to the head of various District departments
- Divided work and met with a department head to determine what supporting documentation is needed for the action.
- After gathering supporting documentation, Green Team decided what actions to select to apply for certification



ORGANIZE

Prioritizing Goals

After reviewing the qualitative data from the platform to determine areas of strengths and weaknesses in the action areas, the Green Team set the following as priority areas:

- **Community Outreach**
- **Support the Garden Initiative**
- **To continue student and staff wellness initiatives through Project Resilience**
- **Increase sustainable practices in energy efficiency, air and water quality**

How Do We Organize Data for Next Year?

Pending the outcome of the application, the Green Team will review the supporting documentation submitted and the Action guidelines to determine next steps.

The Green Team will discuss implementation and data gathering with each department head to create a more sustainable school district.

ESIP



NJ Board Of Public Utilities

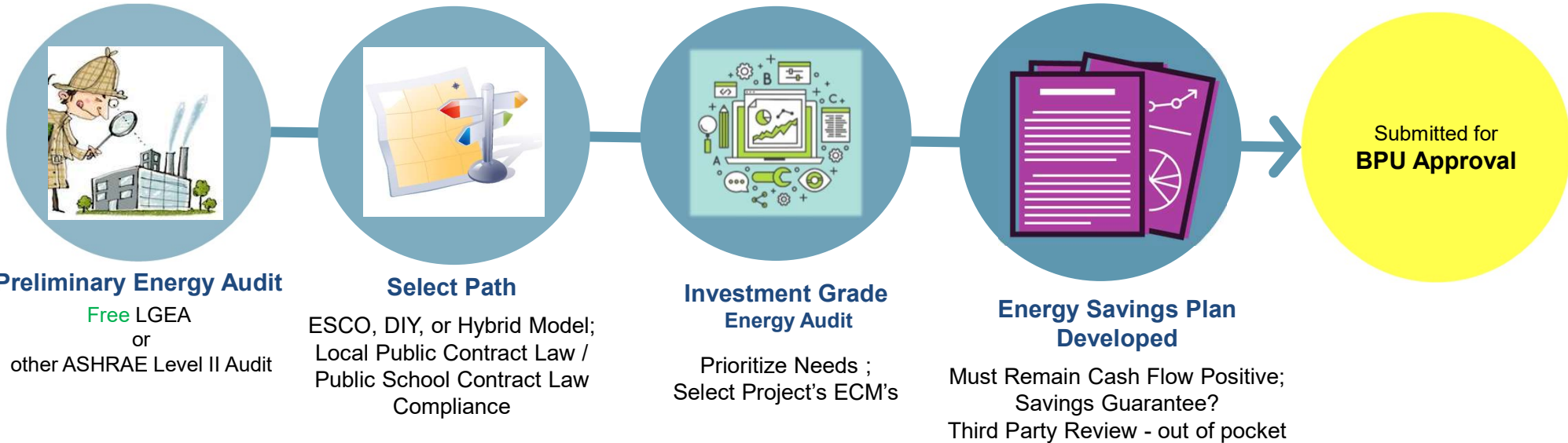
Program Overview

ENERGY SAVINGS IMPROVEMENT PROGRAM (ESIP)

- Energy Performance Contracting = NJ ESIP Program
- A creative tool and financing mechanism that allows public entities to make energy efficiency improvements without impacting their budgets
- Administered by the NJBPU
- Project is paid for with the value of its own energy savings
 - 2 Options: Lease/Purchase Loan or Refunding Bond
- 15 or 20 year pay back term
- NJBPU Approved Incentive Programs
 - Utility or NJCEP
- Can be combined with Federal/State Pandemic Relief Funds
- No upfront capital expenses
- No referendum or impact to tax payers



The ESIP Process



Energy Savings Improvement Program

FOR MORE INFORMATION

Michelle Rossi

ESIP Coordinator

ESIP@bpu.nj.gov

o: 609.913.6295

c: 609.915.0903



SUSTAINABILITY SUMMIT



Mario Caballero, Clinton Township

novamario@gmail.com

Ann Beirne, Jersey City Public School District

abeirne@jcboe.org

Thank You

Michelle Rossi, NJBPU

michelle.rossi@bpu.nj.gov

Nancy Quirk, Sustainable Jersey

quirkn@tcnj.edu

Session slides will be available on sustainablejersey.com by 5/12.

SUSTAINABILITY SUMMIT

