



# *Trees Please!*

## Tree Stewardship for Community Resilience and Well-being

May 3, 2024

*To earn **CEUs** – sign in and  
sign out in binder by door*

# CFMP Guidelines Update



Brian McDonald  
UCF Program Coordinator



# Agenda

Background

NJUCF Overview

New Guidelines

Data & Community

# What is Urban Forestry?

---

The art, science, and technology of managing trees and forest resources in and around urban community ecosystems for the physiological, sociological, economic, and aesthetic benefits trees provide society.

~ Helms, The Dictionary of Forestry



# NJ Shade Tree & Community Forestry Assistance Act (N.J.A.C. 13:1L-17.1 et. seq.)



- December 5, 1996
- Establishes the expanded role of the State's Urban & Community Forestry program
- Provides the basis for local governments to reduce or eliminate liability associated with local tree care programs and shade tree commissions
- Establishes the NJ Community Forestry Council
- Created the **Treasure Our Trees** license plate



## NJ URBAN & COMMUNITY FORESTRY

To encourage and support the stewardship and effective management of trees and forest ecosystems in New Jersey communities through technical and financial assistance.



Planning



Training and Education



Management

# CFMP Guidelines Sections

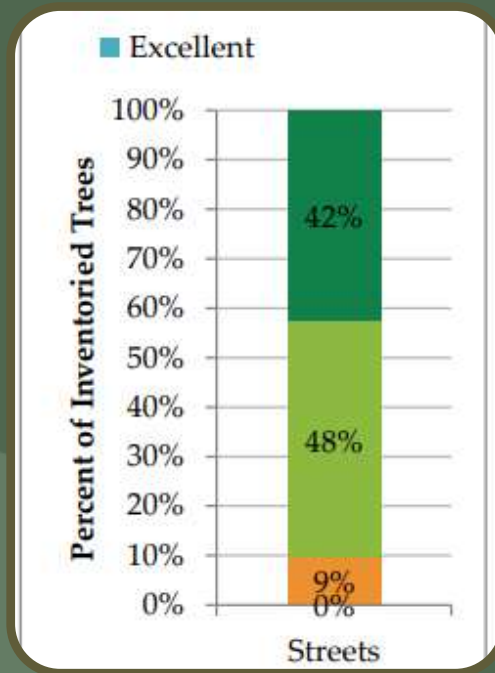
Intro & Background

Program Capacity

\*Community Engagement and Well-being

Plan Implementation

# Major Changes



## Inventory

Now required for CFMP



## Mapping

New Requirements

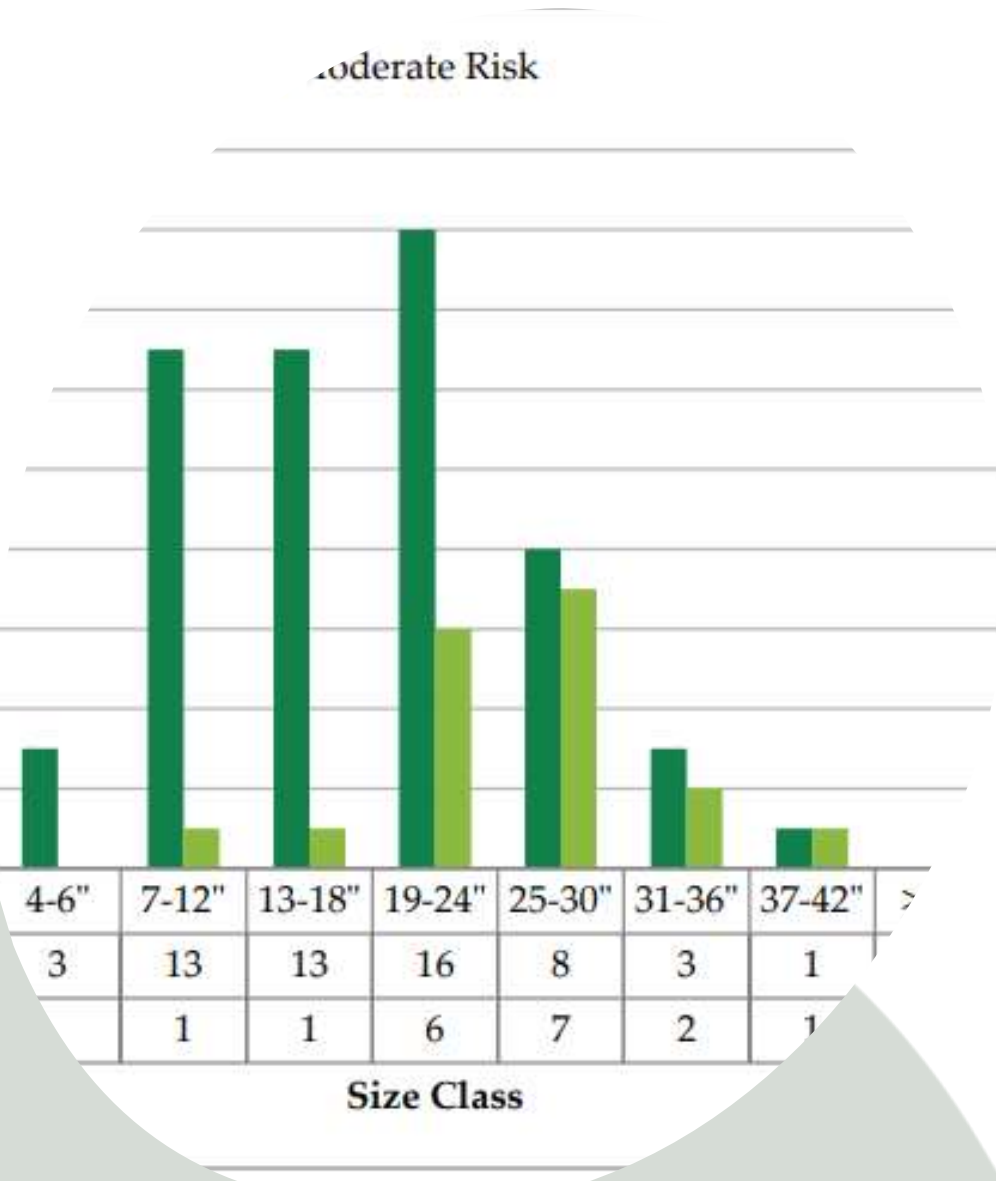


## Goals/Objectives

New way of thinking around goals/elements/objectives/action items



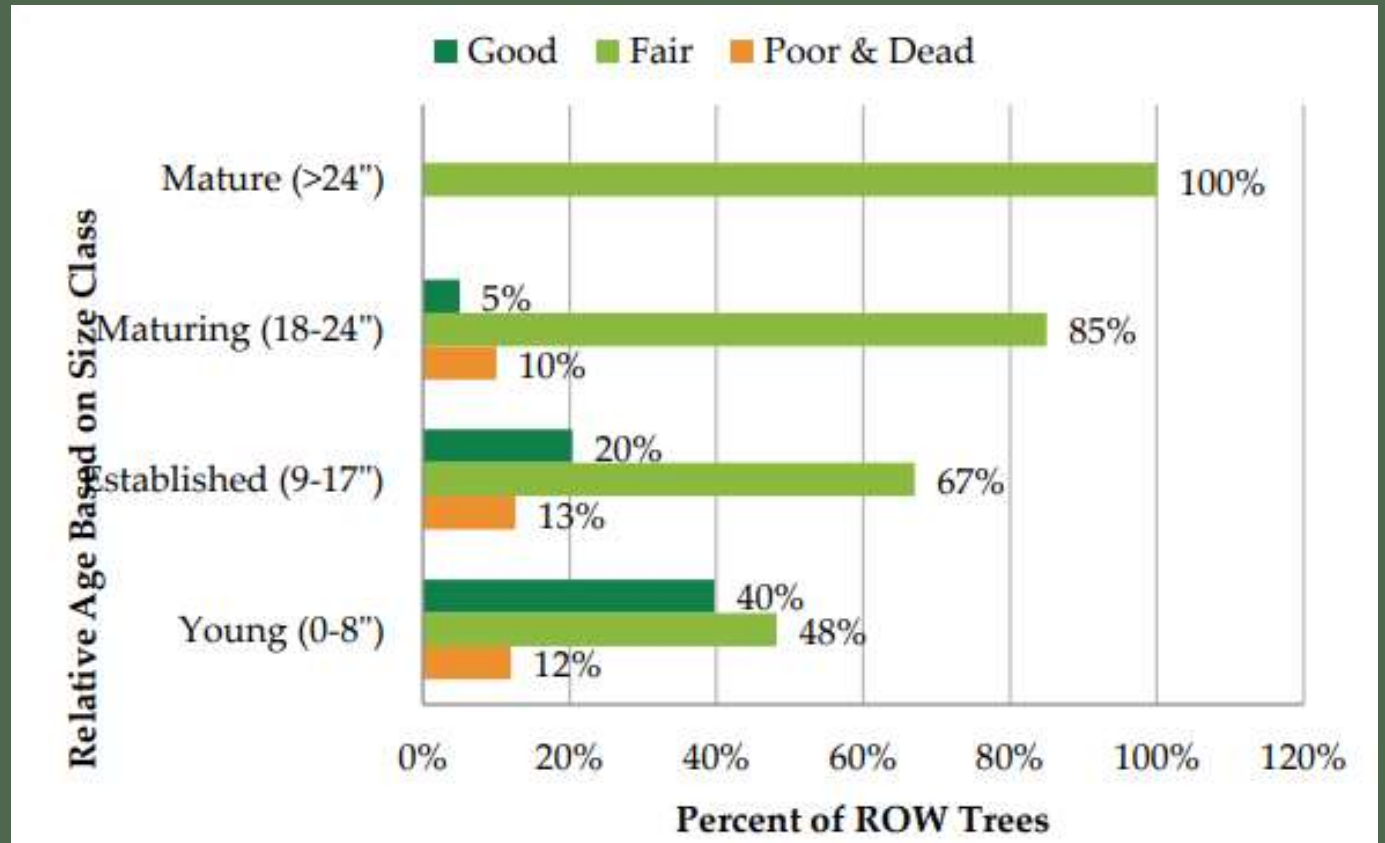
# Inventory



- Species
- DBH
- Current/Potential Height in categories (Small/Med/Large)
- Condition (Good/Fair/Poor/Very Poor/Dead)
- Location
- Notes

# Why Inventory?

Data Driven Management!



# 10-20-30

Where do you stand?

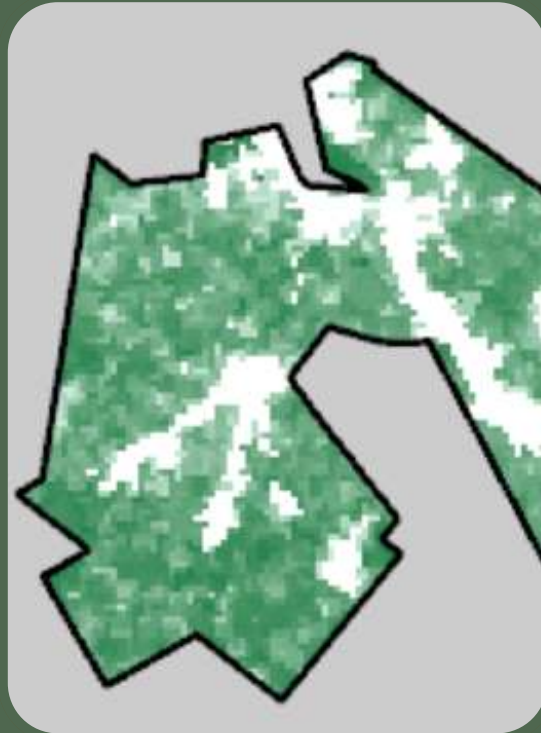
# 3/30/300

3 trees from your home/30% tree cover/300  
meters from green space

# Composition

What do you have? Size? Distribution?

# Mapping Examples



Canopy Cover

NJ Forest Adapt

iTree Canopy

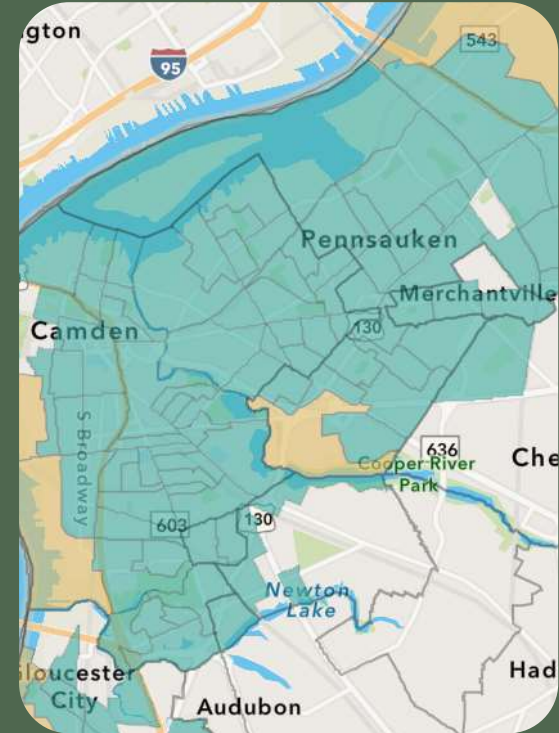
American Forests Tree Equity



Land Use/Land  
Cover

NJ GeoWeb

NJ Forest Adapt



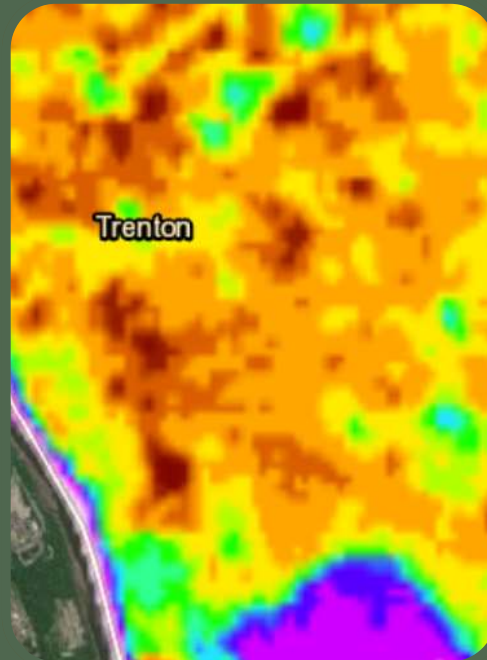
Overburdened/EJ

NJDEP EJ Office

# Other Maps



Inventory



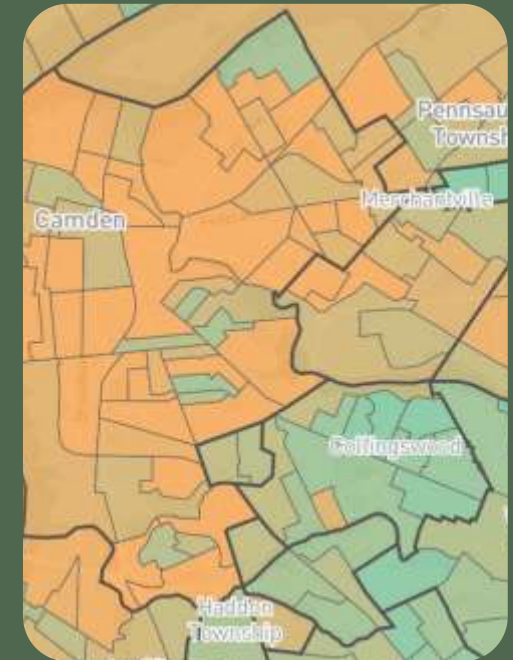
Heat Map

Sustainable Jersey



Impervious Surface

NJ GeoWeb



Tree Equity

American Forests

# CFMP

## Section:

### Community Engagement and Well-being

How do you engage with the Community?

How was CFMP Developed?

- Input from Consultant Forester, Shade Tree Commission, etc?

How will CFMP be disseminated?

Expand on Benefits of Trees and how Decisions are made around Equitable Distribution of trees

What Challenges or Barriers have there been?

# Grants?

“New” Green Communities grant to be announced soon.

This will fund both an inventory and CFMP update

# Thank you!

[Brian.McDonald@dep.nj.gov](mailto:Brian.McDonald@dep.nj.gov)

609-726-1621

[communityforestry@dep.nj.gov](mailto:communityforestry@dep.nj.gov)





# Trees Please!

## Working with a Consulting Arborist



**liz stewart**

NJ Licensed Tree Expert #531

NJ ISA Arborist #1380A

# Perceptions vs Reality of “dangerous” trees

The chances of a tree harming a person is rare.

The chances of a person harming a tree is fairly certain.

## National Safety Council

### Lifetime odds of dying:

Car accident: 1 in 112

Pedestrian: 1 in 485

Drowning: 1 in 1,006

Choking on food: 1 in 2,659

Accidental gun discharge: 1 in 7,944

Hornet, wasp, beestings: 1 in 54,516

Tree or branch falling: 1 in 10,000,000



Urban trees must face vandalism, mechanical damage from lawn mowers, poor planting and mulching techniques, damage or removal for construction or sidewalk issues, poor pruning for utility clearance.

**Trees are “ugly, messy,  
smelly, too big, have**



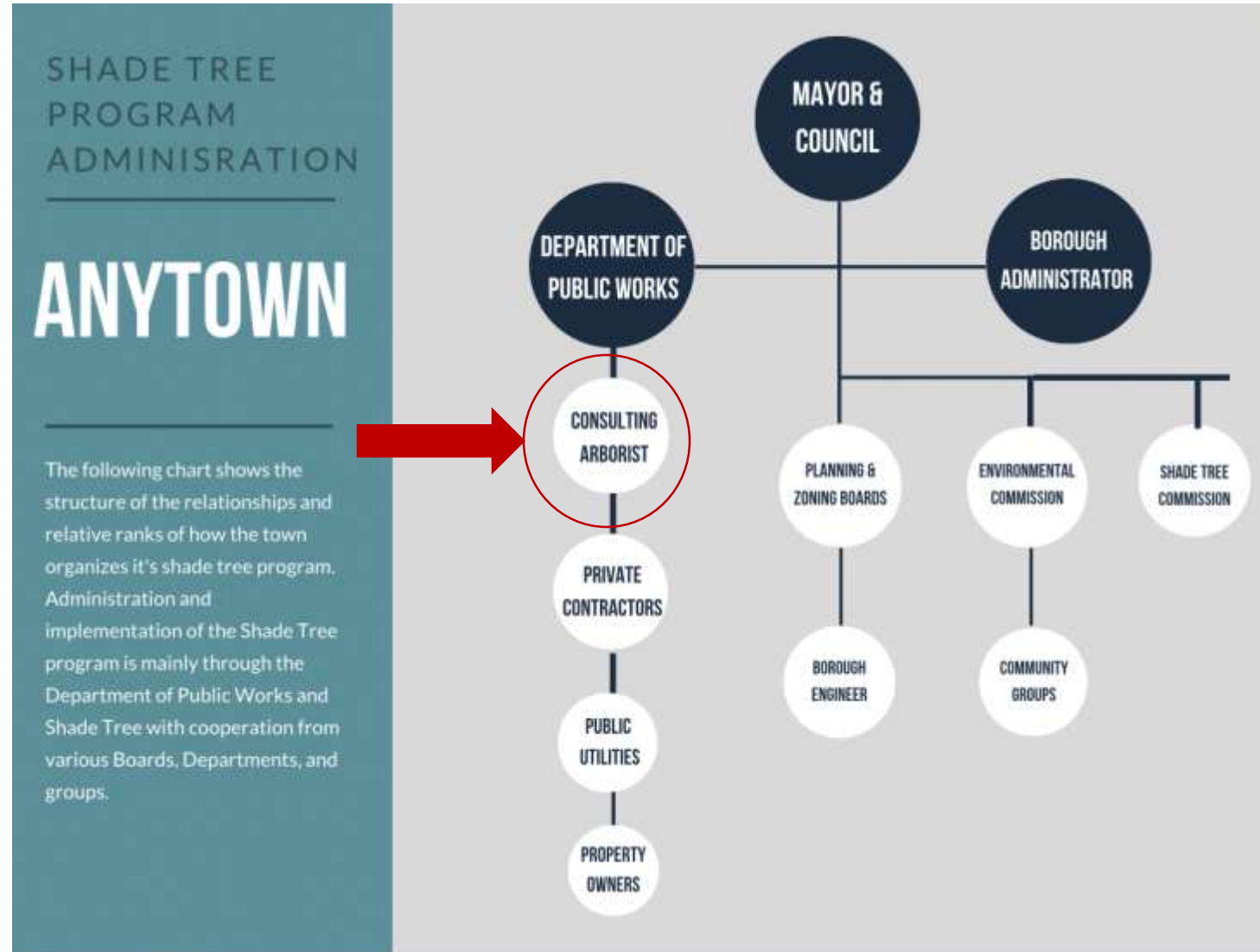
**How  
do you  
see  
trees?**



**How  
do you  
see  
trees?**



# Incorporating an Arborist into your tree program



# Shade Tree Commission vs. Committee

## Liability protection

New Jersey is unique in providing an additional layer of liability protection as outlined in the **NJ Shade Tree and Community Forestry Act 1996**.

59:4-10. Immunity from liability relative to community forestry

16. a. Except as provided pursuant to N.J.S.59:3-14, a shade tree commission, or a member of a shade tree commission, or a volunteer participating in a community forestry program as provided for by P.L.1996, c.135 (C.13:1L-17.1 et al.), is not liable for an injury or death caused directly or indirectly by a tree or shrub, or any part thereof, if:

- (1) the tree or shrub, or pertinent part thereof, is on public property or on a public easement or right-of-way, or the tree or shrub, regardless of its location, is regulated, planted, cared for, controlled, or maintained by the shade tree commission; and
- (2) the local government or the shade tree commission has participated in and successfully completed a training skills and accreditation program established pursuant to section 6 of P.L.1996, c.135 (C.13:1L-17.6) and has a comprehensive community forestry plan approved pursuant to section 7 of that act.

# Setting your community tree program

## Shade Tree Commission

[Home](#) > [Departments](#) > [Shade Tree Commission](#)



### Shade Tree

Shade Tree group is strictly volunteer, our compensation is in seeing the results of our work in the tree-lined streets of River Edge. We enjoy going out to meet and educate residents about trees. Yearly plantings are continued when the budget allows in order to replace trees that have been lost over the years and we work in conjunction with the town's DPW to maintain the health of the town's trees. The Commission members have completed CORE training through the NJ Community Forestry Program and, along with DPW workers, maintain continuing education through state programs yearly to keep informed on tree issues and training. We continually seek out grants to help fund our town tree program.

River Edge has been named a Tree City USA yearly since 2000 and Growth Awards since 2004 for the excellence and dedication shown in its street-tree program. This is a nationally recognized program. In 2005, the NJ Shade Tree Federation presented the Shade Tree Commission members with it's annual Green Communities Award.

See "Requests" below before calling. To e-mail please see "Request Form" on left side of page. Please note we reply to every request either by return phone call, e-mail, or a site visit to the location. If we do a site visit we will ring your door or leave a door tag. You may also attend one of our meetings. When calling the STC, please leave a message with your name, address, and tree question and one of our volunteers will get back to you. If you have a tree emergency, please call the Police and they will direct your call.

**Email**  
[shadetree@riveredge.nj.org](mailto:shadetree@riveredge.nj.org)

**Location**  
705 Kinderkamack Road  
River Edge, NJ 07661

[Get Directions](#)





# Why use a consulting Arborist

## Consulting Arborist Role:

- CFMP- community forestry management plan
- Review tree related ordinances
- Tree evaluations & risk management
- Tree maintenance & planting programs
- Create tree specifications
- Coordinate with utility tree work
- Violations – tree valuation
- Help with education of town officials, workers, volunteers, community

## Volunteers Role:

- Help educate residents: social media, lawn signs, talks, events
- Arbor Day celebration getting schools involved
- Tree Planting demonstrations
- Encourage proper tree care
- Encourage tree planting
- Checks and balances



# Where to find a consulting Arborist?

## NJ Tree Expert and Tree Care Operators Licensing Act

- NJLTE – NJ Licensed Tree Expert
- NJLTCO- NJ Licensed Tree Care Operator
- ISA Arborist – can become NJLTE
- ISA TRAQ – Tree Risk Assessment Qualification

NJ Board of Tree Experts website.

[www.njbte.org](http://www.njbte.org)

Become a member of the NJSTF –  
Tree Talks

[www.njstf.org](http://www.njstf.org)

Trees are Good –

[www.treesaregood.org](http://www.treesaregood.org)

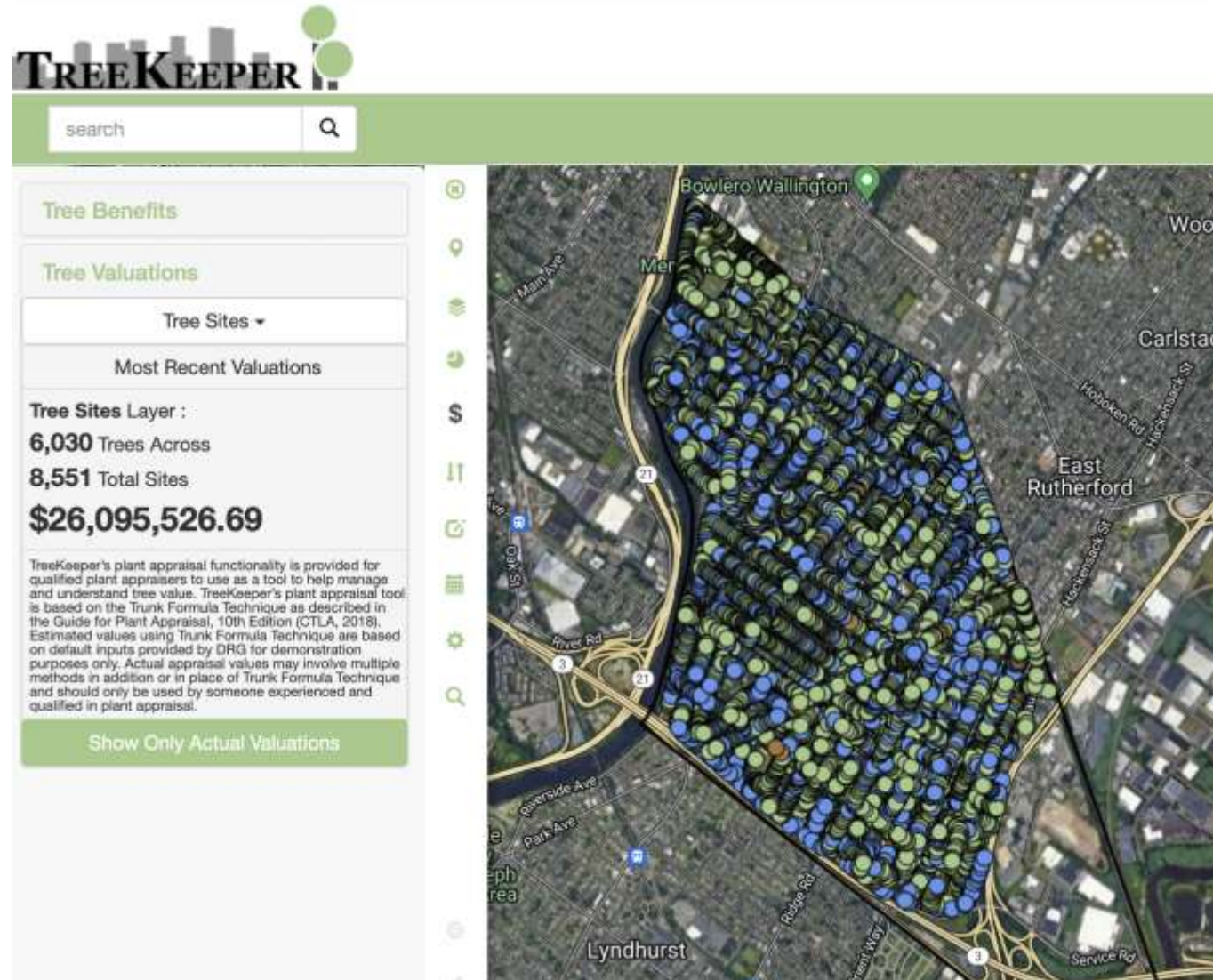


# How to work with a consulting Arborist



Nobody can accurately predict all tree failures...

# Full Tree Inventory



Can include street, park, open space, municipal owned trees.

# Windshield survey

ISA Level 1

ISA Level 2



# How to use an inventory

Budgeting

Create maintenance plan

Tree planting

Record keeping

Documentation for Violations

Pest & Disease control



# Centennial Causeway Project Woodcliff Lake



# Detailed report with specs.



Elizabeth Blawie, N.J.L.T.E. #531  
NJ Licensed Tree Expert  
201-254-8438

6/14/21

## Tree recommendations for the Woodcliff Lake Centennial Causeway Project

Woodcliff Lake Rd. and Broadway intersection, Woodcliff Lake NJ 07677 (adjacent to the Woodcliff Lake Train station)

Trees in Question: *Pyrus callaryana* (Bradford pear), approximately 60-70 trees.

5/23/21: Site visit with Clay Bosch (Shade Tree Commission) and Raymond Milcsik (Neglia Engineering)

The approximately 70 existing mature Bradford Pears along the causeway are still in good shape. There are a few trees (approx. 3-4) on the northeast end by Broadway that are starting to decline, which could be considered for removal when this project begins.

In order to preserve the look of the causeway, I would recommend keeping the existing pear trees and plan on planting a mix of 2 trees spaced between (see below.) As the pear trees decline and are removed, the new trees will have had time to grow in the protection of the existing pears, and will be able to take over without interrupting the current look drastically.

It is recommended to plant at least 2 trees types for slight variation and to be prepared incase one tree species develops a disease or insect that would affect them all.

It would be recommended to push the sidewalk out to the curb, eliminating the small grassy area between the curb and sidewalk, giving some more space for tree root growth inside the sidewalk,



## Recommendations for re-planting this area with the goal of varying species:

Plant trees between existing Bradford pears and/or pace trees 25ft. apart depending on each location.

The spacing should be 2-5 Honeylocust, 3-5 Hawthorne continuing along the causeway in a varying pattern. Salt tolerant & wind tolerant with added visual interest. Number of trees needed will be determined when survey plans are submitted for review.

For budgeting purposes, water irrigation systems (such as Tree Diaper which is self-watering) should be placed at the base of the trees at the time of installation.

Deer guards should be places on all new trees at the time of installation, allowing for 6-8" of growth.



# Bradford pear pruning along Centennial Causeway Woodcliff Lake



# Tree planting specifications



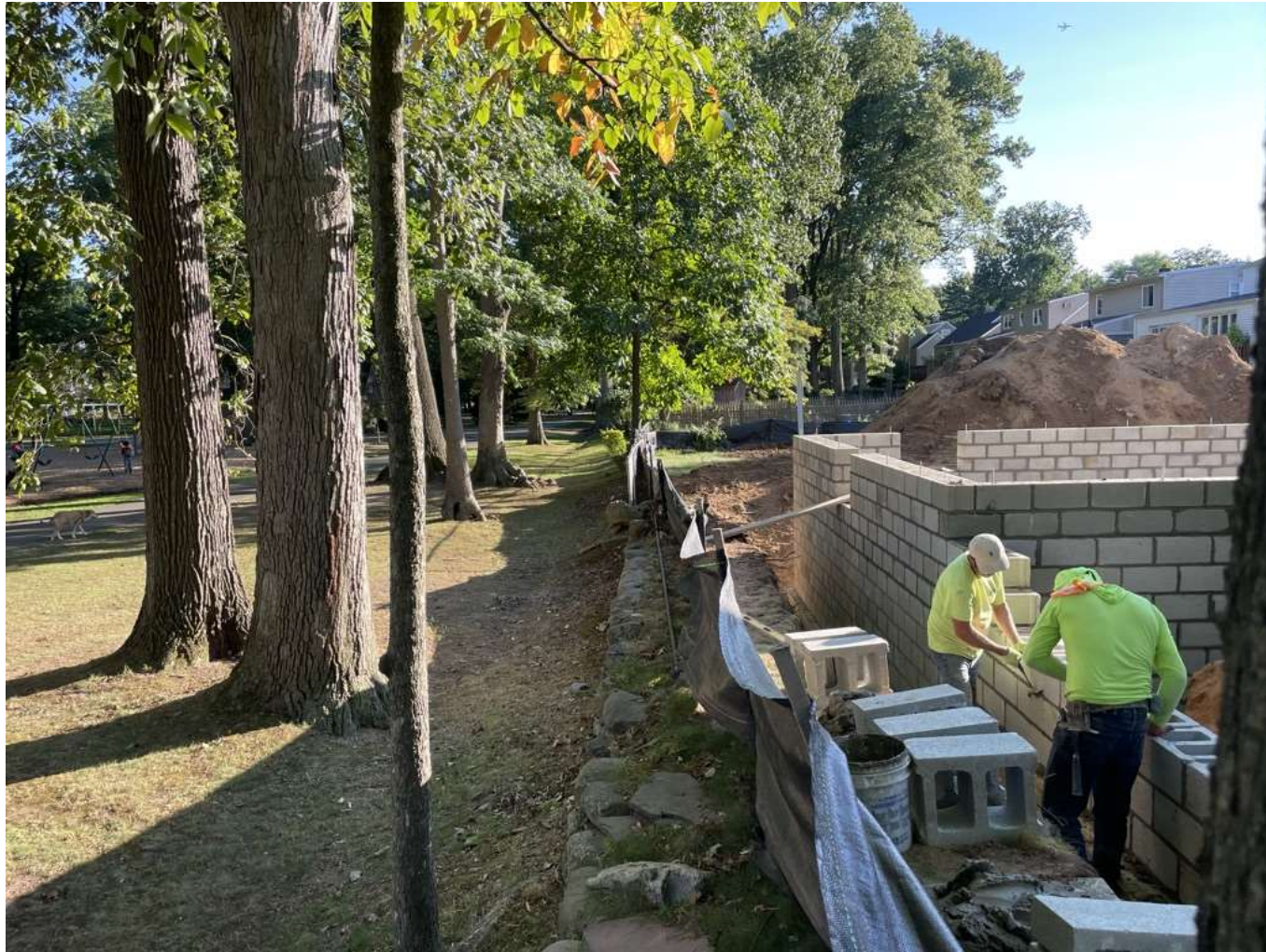
# Meet with utilities to plan work



# Sidewalk & sewer programs policies & inspections



# Construction policies planning & enforcement



# Violations

Determine the value of trees



**Tree Evaluation Form**  
Based on "Guide for Plant Appraisal", 9<sup>th</sup> Ed. ISA 2000

Evaluator: Sz. Skowid Signature: /Sz. Skowid Date: 4/13/23  
Reason for Evaluation: Borough Trees removed without permit. Tree valuation based on stumps, Google map, site visit from 3/17/22. Species Rating Based on list of Northern NJ.

Location	Species	Trunk Diam. cross section DBH sq. inch	Replacement trunk area (DBH x 0.4 sq.inch)	Base Price (44 x replacement 75%)	Species Rating %	Basic value (31,500 x Species Rating)	Condition 90%	Location 100%	Appraised Value
Tree 1	Picea abies = Norway spruce	18" = 254.5	241.9	11,611.20	80% 9,288.96	10,768.96	9,710.10	9,710.10	\$9,710.10
Tree 2	Quercus palustris = Pin oak	28" = 615.8	603.2	28,953.6	80% 23,162.88	24,662.88	22,196.59	22,196.59	\$22,196.59
Tree 3	Quercus rubra = red oak	30" = 706.9	694.3	33,526.4	90% 29,993.76	31,493.76	28,344.38	28,344.38	\$28,344.38
Tree 4	Quercus rubra = red oak	21" = 346.4	333.8	16,022.4	90% 14,420.16	15,920.16	14,328.14	14,328.14	\$14,328.14
Tree 5	Quercus rubra = Red oak	32" = 804.3	791.7	38061.16	90% 34201.44	35701.44	32131.30	32131.30	\$32,131.30
Tree 6	Pinus strobus = White Pine	32" = 804.3	791.7	38061.16	80% 30401.28	31901.28	28,711.15	28,711.15	\$28,711.15
								<b>TOTAL</b>	<b>\$135,421.66</b>

# Westwood Arborfest 2024

Westwood Shade Tree Advisory Committee is at Veterans Park Westwood.

March 21 at 10:58 PM · Westwood, NJ · 📍

Today Westwood's iconic downtown Copper Beech tree got a check up, just like humans do!

Licensed Tree Expert & Arborist Liz Stewart, along with members of the Westwood Shade Tree Advisory Committee, Westwood Heritage Society, and Westwood DPW, evaluated our beautiful tree located in Veteran's Park.

Why did we do this? We want to honor the historic Copper Beech as part of our Arbor Fest 2024 celebration while also taking a proactive approach to ensuring the tree's good health... [See more](#)



## Evaluation of Copper Beech (*Fagus sylvatica purpurea*)

3/21/24: Veteran's Memorial Park, 50 Madison Ave, Westwood, NJ 07675.

Photos on file.



**Tree:** *Fagus sylvatica purpurea* (European copper beech) 56" DBH (176" circumference), approximate 70ft height and spread, mature tree. There is a visible root flare with no concerning defects at the base of the tree. The soil around the tree is bare and is most likely compacted due to pedestrian traffic. There are name and initial carvings in the trunk along approximately 4ft of the trunk from the base up.

The crown is in good overall health with viable buds noted throughout the canopy. This type of tree typically holds leaves over winter and there were leaves still holding on from the previous fall indicating good health and viability of the tree. There is some minor deadwood at the tips of the low hanging branches mostly due to pedestrian damage as people pass through under the tree. There is minor deadwood being shed naturally in the canopy. The live crown-trunk ratio is over 50%, and is probably closer to 75%, which is excellent indicating a healthy canopy and proper maintenance. This tree has been well maintained throughout its life where pruning that was done to maintain a natural shape and allowing the tree to be able to compartmentalize (respond to pruning cuts) well. There is minor deadwood and some minor crossing branches in the crown that would be difficult to prune without bringing in large equipment which would damage the low hanging branches and potentially compacting the soil in the root zone. The minor tree maintenance needed would not be enough to bring a climber in. The tree is in overall good condition, good form and good structural condition.

### Recommendations:

The Borough does yearly maintenance on the tree and brings in an outside tree company to do preventative feedings boosting the tree's health. I would recommend adding a 2" layer of bark mulch or pine nugget mulch over the root zone out to the canopy drip line. However, be careful using only sterilized mulch so as not to introduce pathogens such as Beech Leaf Disease nematodes, fungal spores, or aphids to the tree. Depending on the condition of the soil present and level of compaction the tree maintenance company could advise further on deep soil vertical mulching as long as the tree roots are not negatively impacted. Deep watering can be implemented during drought periods. Beech Leaf Disease is a threat to trees in Bergen County- this tree should be monitored for signs and treated with the most updated information available. There is not a clear method of infection identified yet and treatments are still experimental as for effectiveness. Preventative measures are to keep the tree healthy.

**Tree Valuation: \$107,207.28** (see calculations below)

# Celebrating trees



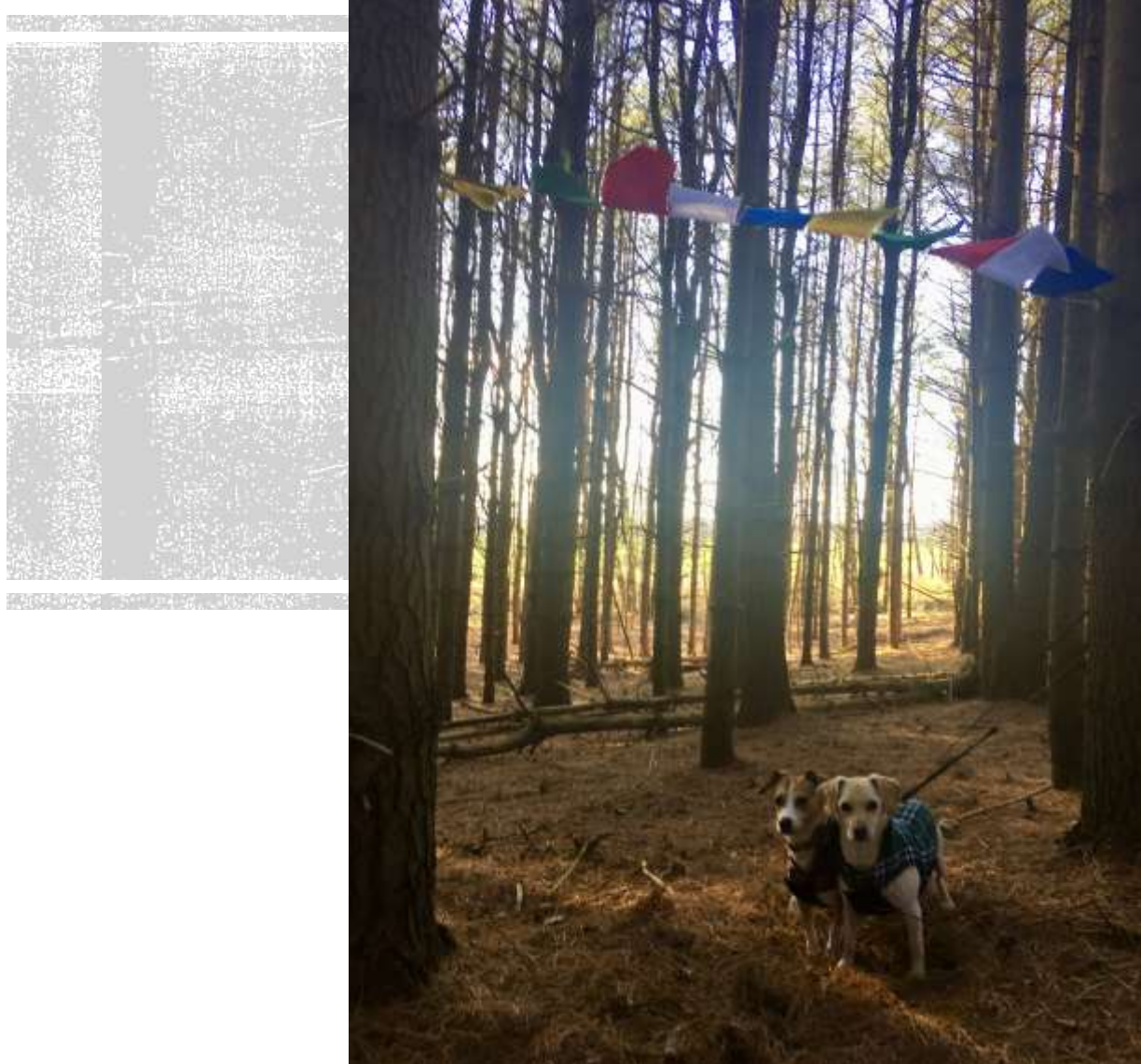


# The Proper Mulch Movement



# Trees Please!

## Working with a Consulting Arborist



**liz stewart**

[lizstewart222@gmail.com](mailto:lizstewart222@gmail.com)

NJ Licensed Tree Expert #531

NJ ISA Arborist #1380A

# Trees Please! Tree Stewardship for Community Resilience and Well Being



Pam Zipse, Executive  
Director

[pzipse@njtreefoundation.org](mailto:pzipse@njtreefoundation.org)  
@njtrees



# Tree Stewardship Improves Community Resilience and Well Being



Royden Street, Camden 2002 before trees



NJ Tree Foundation Planting  
Royden Street, Camden 2002 after trees

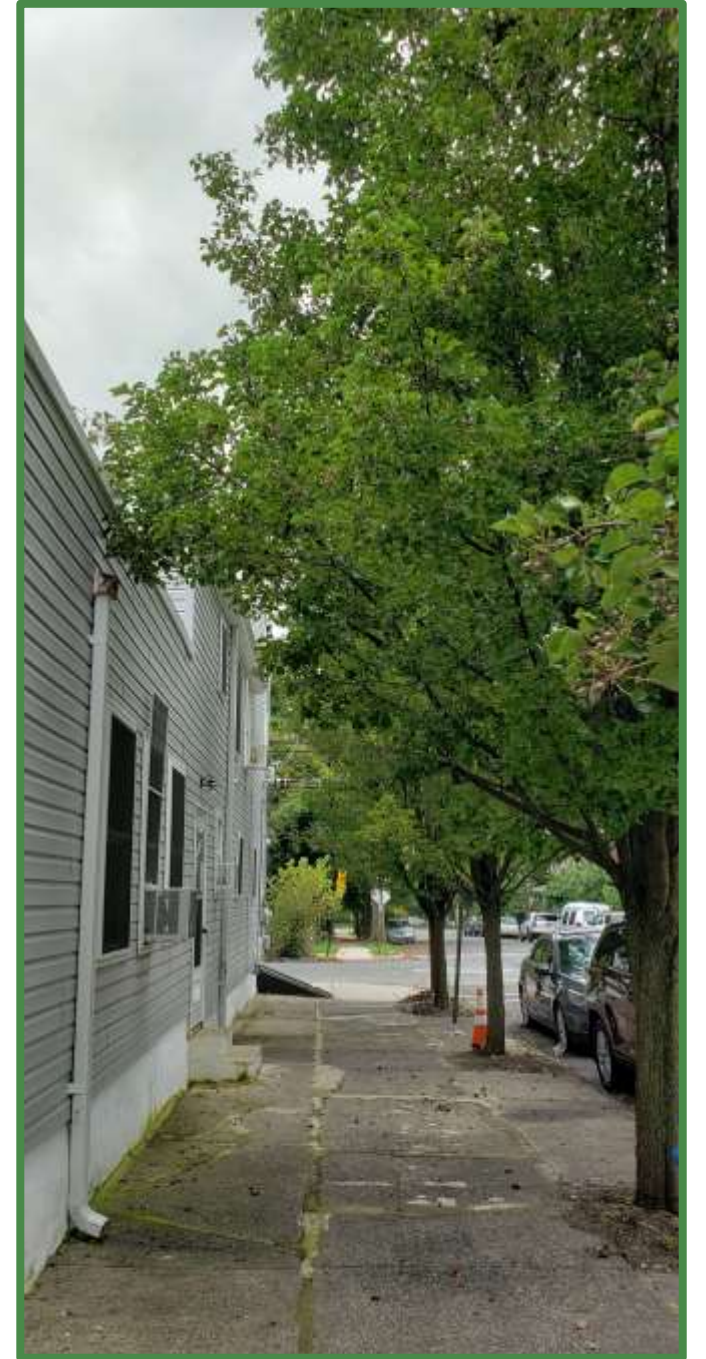
# Trees make a difference!



Royden Street, Camden, 2023

# To derive the benefits of trees...

The trees must live and grow!



# Challenges: Concrete and Utilities



# Challenges: Offloading and Clean-up





# Challenges: Planting Depth

Top of  
root ball



Root  
Flare

# Challenges: Watering



# Challenges: Watering



# Challenges: Tree Crimes



# Get help!

- **Work with local community leaders / community groups / block organizations**
  - Canvas with a familiar face
  - Identify and address community needs / priorities
- **Partner with local non-profits**
- **Take advantage of networking and educational opportunities**
  - Attend conferences (SJ Sustainability Summit, NJ Shade Tree Federation Conference...)
  - NJSTF Tree Talk (May 8<sup>th</sup> 7:00pm)
- **Make friends with your local DPW**

# Think about (and talk with) the people who live where you want to plant trees...

- Listen
- Collaborate



# What are the Community Priorities?



# Find other meaningful metrics for success

Not just counting trees...





# Thank you, and good luck!



Pam Zipse, Executive Director  
[pzipse@njtreefoundation.org](mailto:pzipse@njtreefoundation.org)  
@njtrees





# Sustainable Jersey Tree Actions

Melanie McDermott  
Senior Researcher  
mcdermom@TCNJ.edu

# Tree Stewardship actions

## For up to 135 points:

- Community Forestry Management Plan and NJUCF Accreditation (≤ 20 points)
  - Tree Hazard Inventory (10 points)
  - Tree Maintenance Programs (10 points)
  - Tree Planting Programs (10 points)
- Tree Protection Ordinance (10 points)
- Heat Island Assessment & Mitigation Plan (≤ 20 points)
- 4 wildfire protection actions (≤ 45 points)

SUSTAINABILITY  
SUMMIT



# Q & A

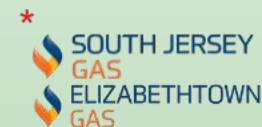
# Thank You

Session slides will be available on [sustainablejersey.com](https://sustainablejersey.com) by 5/10.

## PROGRAM UNDERWRITERS



## CORPORATE SPONSORS



\*Digital Schools Sponsor

# UPCOMING EVENTS AND OPPORTUNITIES

## EARNING YOUR DIGITAL SCHOOLS STAR: TIPS FOR SUCCESS WEBINAR

This webinar offers an overview of the Digital Schools program, insights and examples of ways to improve digital school action submissions and earn points to attain Digital Schools Star recognition. The informational webinar will be held on **Wednesday, May 8, 2024, 3:30pm-4:30pm.**

**Register:** [bit.ly/4dhdj91](https://bit.ly/4dhdj91)

## 2024 MUNICIPAL CERTIFICATION CYCLE

The next deadline to apply for certification is **Friday, May 10, 2024.** The final application deadline is **Wednesday, July 31, 2024.** View the full cycle timeline on the 2024 Certification Cycle page.

**Learn More:** [bit.ly/SJ2024CertCycle](https://bit.ly/SJ2024CertCycle)

## NJBPU'S COMMUNITY ENERGY PLANNING GRANTS

The New Jersey Board of Public Utilities is offering a new round of Community Energy Plan Grants for all New Jersey municipalities.

Application Deadline: **Friday, May 24, 2024**

**Learn More:** [bit.ly/3WcmAt7](https://bit.ly/3WcmAt7)

## TRI-COUNTY SUSTAINABILITY GENERAL MEETINGS

This Sustainable Jersey Regional Hub will host virtual meetings on a variety of sustainability topics throughout the year. The next meeting is **Tuesday, May 28, 2024, 7:00pm-8:00pm.**

**Learn More:** [bit.ly/Tri-CountySustainability](https://bit.ly/Tri-CountySustainability)

## 2024 SUSTAINABLE COMMUNITIES GRANT PROGRAM

Atlantic City Electric is contributing \$35,000 to support municipal environmental stewardship and resiliency projects within its service territory. Join us for an informational webinar on **Monday, May 13 from 1:00pm-2:00pm** to learn more about the program and how to use the online application portal.

**Application Deadline: Thursday, June 27, 2024**

**Learn More:** [bit.ly/SustainableCommunitiesGrantProgram](https://bit.ly/SustainableCommunitiesGrantProgram)

## 2024 SCHOOL CERTIFICATION CYCLE

The final deadline to apply for certification and Digital Schools Star Recognition is **Thursday, June 13, 2024.** View the full cycle timeline on the 2024 Certification Cycle page.

**Learn More:** [bit.ly/SJS2024CertCycle](https://bit.ly/SJS2024CertCycle)

## HOW TO ADOPT OR UPDATE A COMPLETE AND GREEN STREETS POLICY WEBINAR

**Save the date!** Join a one-hour walkthrough on how to create your own model municipal Complete and Green Streets Policy, brought to you by the Voorhees Transportation Center at Rutgers University, Sustainable Jersey, the New Jersey Department of Transportation, and the North Jersey Transportation Planning Authority, on **Tuesday, September 17, 2024, 12:00pm-1:00pm.** Registration information coming soon. Follow-up Open House Q&A for attendees to be held virtually on **Wednesday, October 30, 2024 from 3:00pm-5:00pm.**